

RAWLS CHURCH ROAD  
(S.R.1415) 60' RIGHT-OF-WAY



CAROLINA LAND DEVELOPMENT GROUP INC.  
ENGINEERING CONSULTANTS  
LICENSE C-2743  
NORTH CAROLINA  
SEAL 042149  
SPENCER B. TERRY  
DECEMBER 10, 2019

CAROLINA LAND DEVELOPMENT GROUP INC.  
1304 N. RESPASS STREET, WASHINGTON, N.C. 27889  
EMAIL: SPENCER@CLDGCRP.COM

HARNETT COUNTY PROJECT #:

07/22/2019: REVISED LOT 27 AND 28  
08/15/2019: REVISED GRADING AT CUL-DE-SAC, STORM DRAINAGE, WATERLINE  
10/15/2019: REVISED MAIL KIOSK  
11/04/2019: REVISED EROSION CONTROL-ADD DETAIL  
12/10/2019: ADD SILT FENCE AT WETLANDS PER USACE

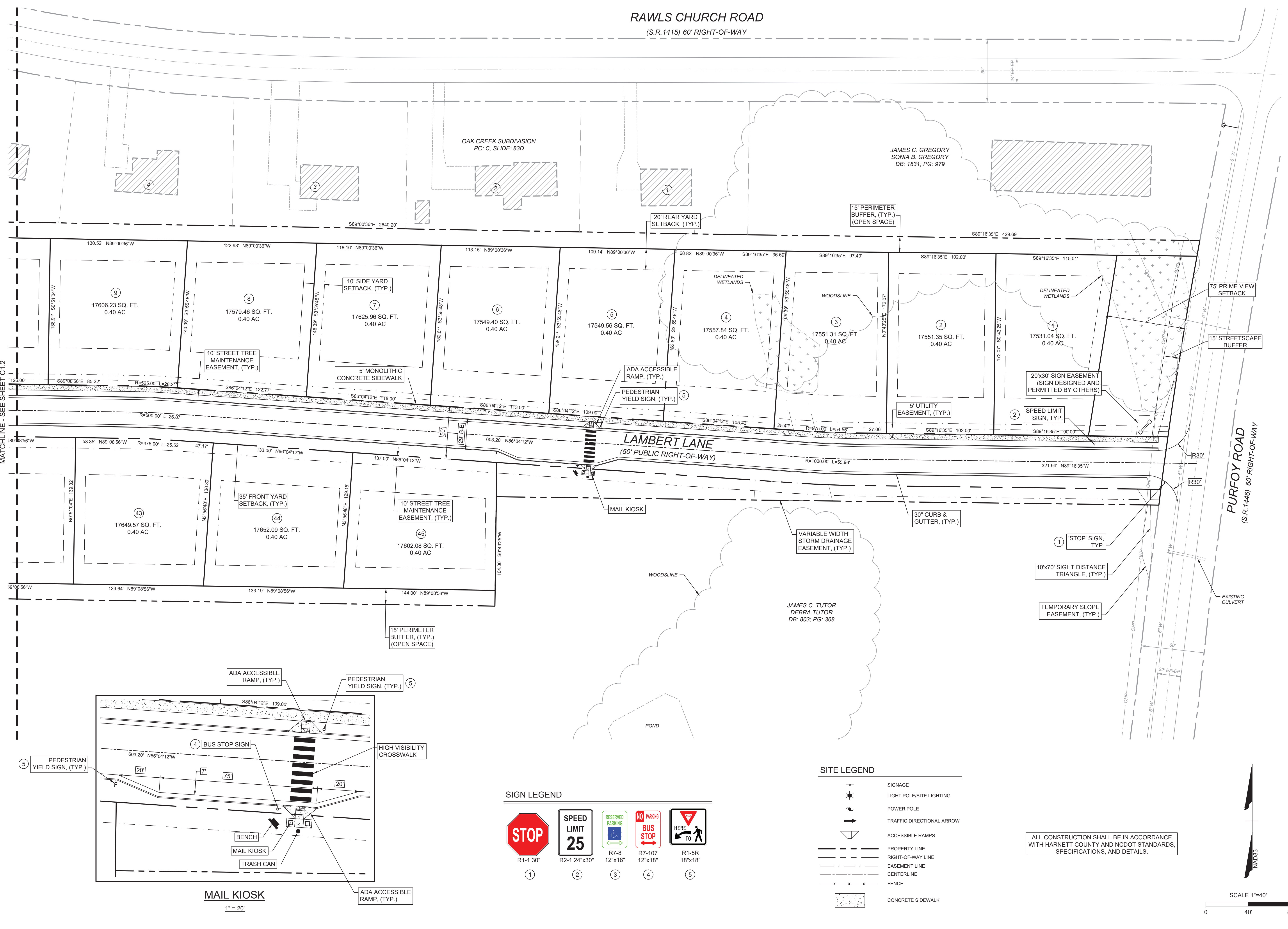
DATE: DECEMBER 10, 2019  
ISSUED FOR: CONSTRUCTION

CONSTRUCTION DRAWINGS

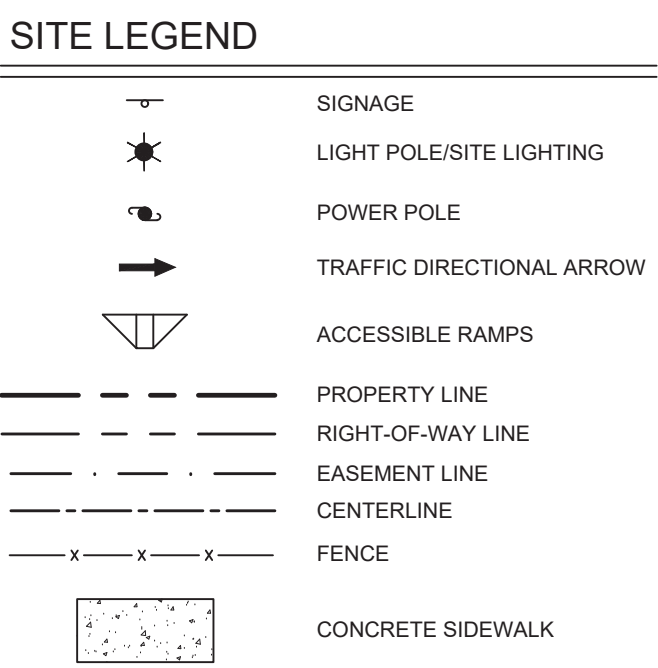
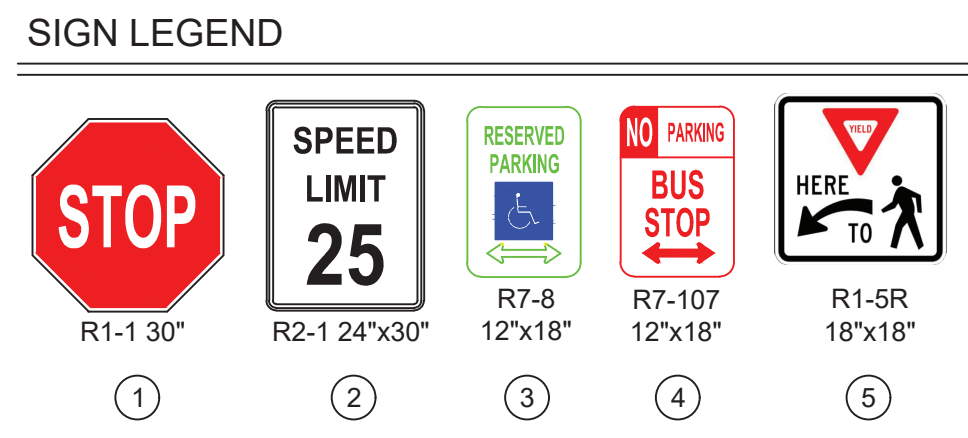
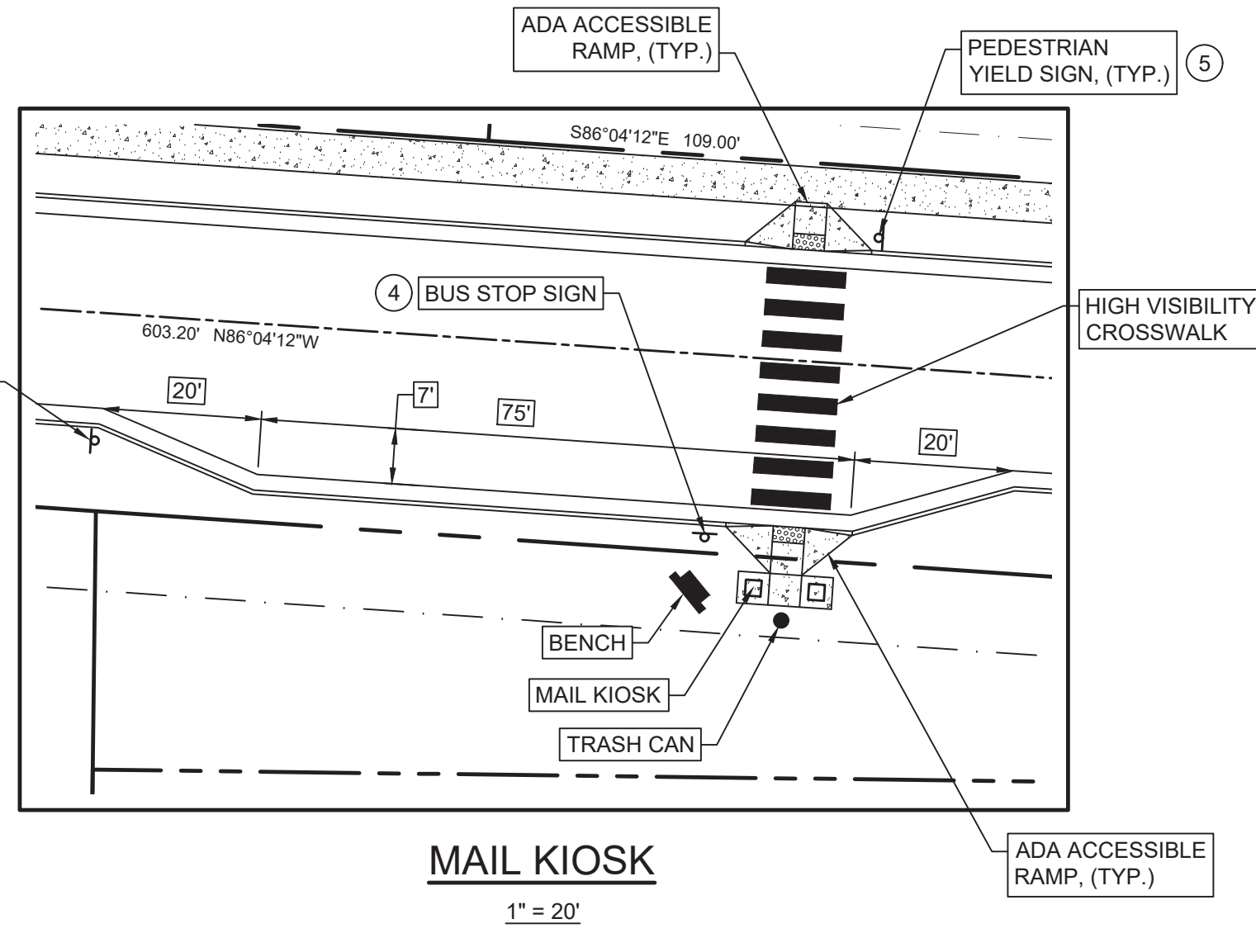
SUBDIVISION PLAN

C 1.1

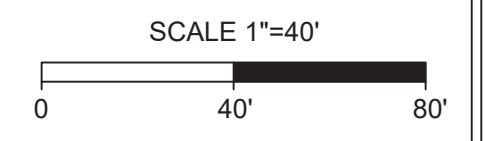
DRAWN BY: SBT CHECKED BY: SBT

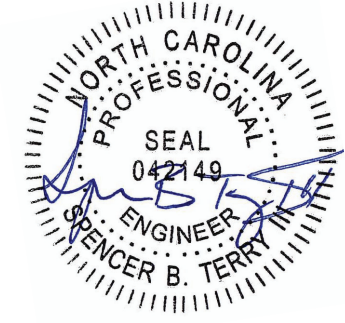
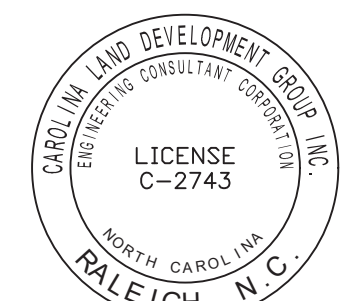


MATCHLINE - SEE SHEET C1.2



ALL CONSTRUCTION SHALL BE IN ACCORDANCE WITH HARNETT COUNTY AND NCDOT STANDARDS, SPECIFICATIONS, AND DETAILS.





DECEMBER 10, 2019

**CAROLINA LAND DEVELOPMENT GROUP INC.**  
ENGINEERING CONSULTANTS GROUP, INC.  
LICENSE C-2743  
NORTH CAROLINA PROFESSIONAL ENGINEER  
SPENCER B. TERRY

**PURFOY PLACE SUBDIVISION**  
PURFOY ROAD  
1304 N. RESPESS STREET, WASHINGTON, N.C. 27889  
EMAIL: SPENCER@CLDGCORP.COM  
HARNETT COUNTY PROJECT #:

07/22/2019: REVISED LOT 27 AND 28  
08/15/2019: REVISED GRADING AT CUL-DE-SAC, STORM DRAINAGE, WATERLINE  
10/15/2019: REVISED MAIL KIOSK  
11/04/2019: REVISED EROSION CONTROL--ADD DETAIL  
12/10/2019: ADD SILT FENCE AT WETLANDS PER USACE

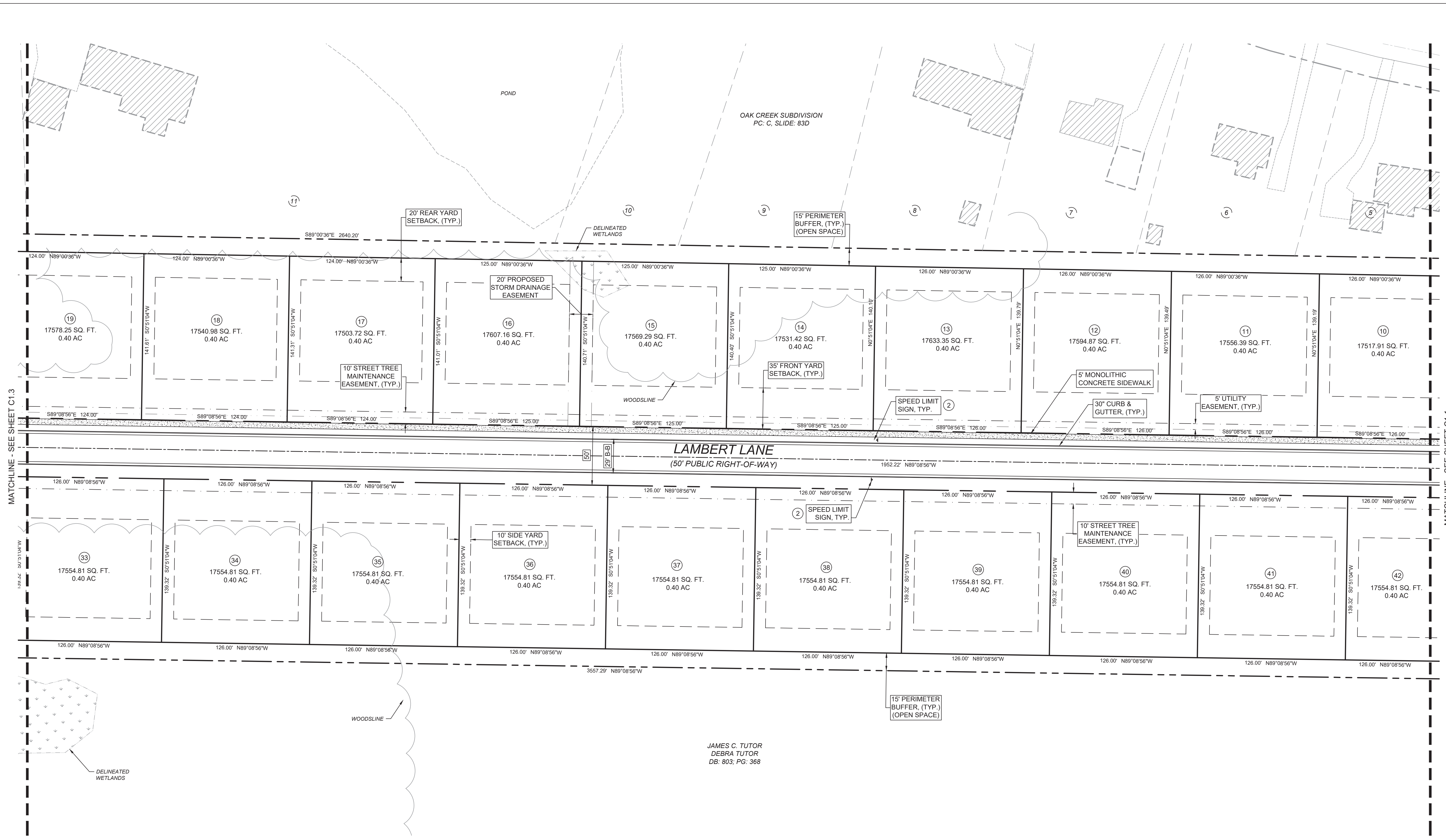
DATE: DECEMBER 10, 2019  
ISSUED FOR: CONSTRUCTION

CONSTRUCTION DRAWINGS

SUBDIVISION PLAN

C 1.2

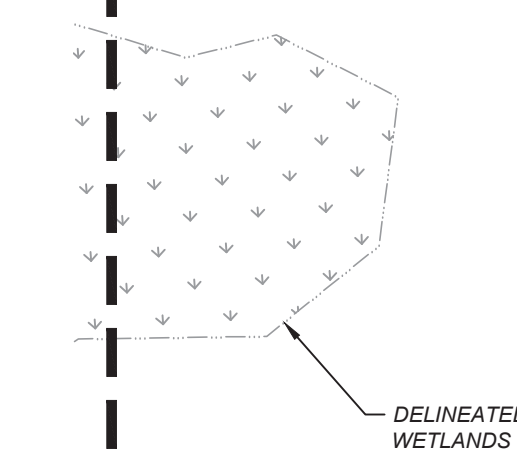
DRAWN BY: SBT CHECKED BY: SBT



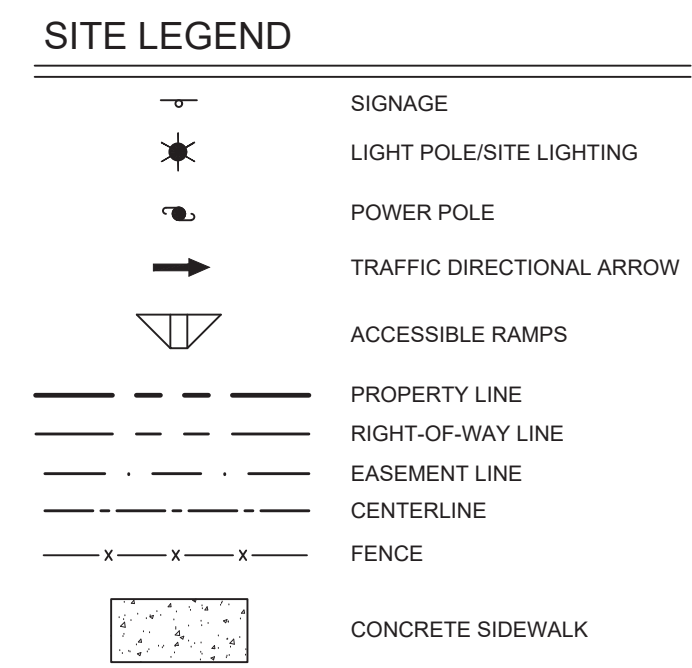
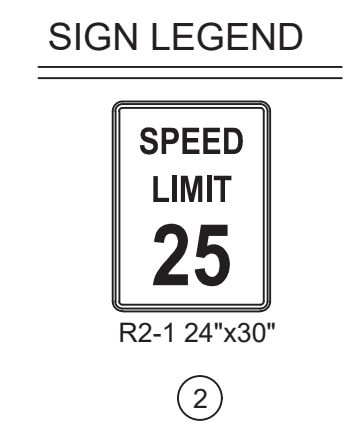
MATCHLINE - SEE SHEET C1.3

MATCHLINE - SEE SHEET C1.1

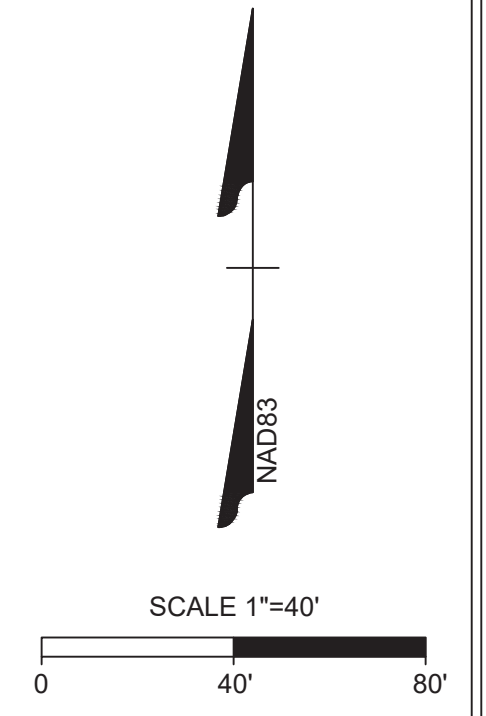
139.32' S0°51'04\"

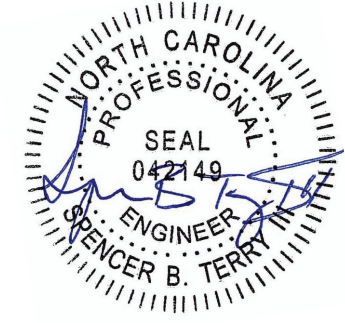
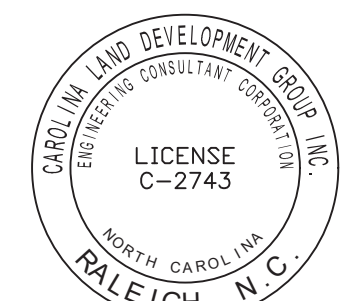


JAMES C. TUTOR  
DEBRA TUTOR  
DB: 803; PG: 368



ALL CONSTRUCTION SHALL BE IN ACCORDANCE WITH HARNETT COUNTY AND NCDOT STANDARDS, SPECIFICATIONS, AND DETAILS.





DECEMBER 10, 2019

**CAROLINA LAND DEVELOPMENT GROUP INC.**  
ENGINEERING CONSULTANTS  
1304 N. RESPASS STREET, WASHINGTON, N.C. 27889  
EMAIL: SPENCER@CLDGCORP.COM

**PURFOY PLACE SUBDIVISION**  
PURFOY ROAD  
HECTORS CREEK TOWNSHIP, NORTH CAROLINA  
HARNETT COUNTY

HARNETT COUNTY PROJECT #:

- 07/22/2019: REVISED LOT 27 AND 28
- 08/15/2019: REVISED GRADING AT CUL-DE-SAC, STORM DRAINAGE, WATERLINE
- 10/15/2019: REVISED MAIL KIOSK
- 11/04/2019: REVISED EROSION CONTROL-ADD DETAIL
- 12/10/2019: ADD SILT FENCE AT WETLANDS PER USACE

DATE: DECEMBER 10, 2019  
ISSUED FOR: CONSTRUCTION

**CONSTRUCTION DRAWINGS**

**SUBDIVISION PLAN**

**C 1.3**

DRAWN BY: SBT CHECKED BY: SBT

CAROLINA LAND DEVELOPMENT

BOBBY L. PRINCE  
LYNDA PRINCE  
DB: 678; PG: 431

JAMES C. TUTOR  
DEBRA TUTOR  
DB: 803; PG: 368

CURVE TABLE						
CURVE	RADIUS	LENGTH	TANGENT	DELTA	CHORD BEARING	CHORD
C1	50.00	40.00	21.14	45°50'18"	S67°56'01"W	38.94
C2	50.00	40.00	21.14	45°50'12"	S22°05'46"W	38.94
C3	50.00	40.00	21.14	45°50'12"	S23°44'26"E	38.94
C4	50.00	70.25	42.33	80°29'55"	N60°34'17"E	64.61
C5	25.00	30.77	17.68	70°31'44"	N55°35'12"E	28.87

- SITE LEGEND**
- SIGNAGE
  - LIGHT POLE/SITE LIGHTING
  - POWER POLE
  - TRAFFIC DIRECTIONAL ARROW
  - ACCESSIBLE RAMPS
  - PROPERTY LINE
  - RIGHT-OF-WAY LINE
  - EASEMENT LINE
  - CENTERLINE
  - FENCE
  - CONCRETE SIDEWALK

ALL CONSTRUCTION SHALL BE IN ACCORDANCE WITH HARNETT COUNTY AND NCDOT STANDARDS, SPECIFICATIONS, AND DETAILS.

SCALE 1"=40'  
0 40' 80'

